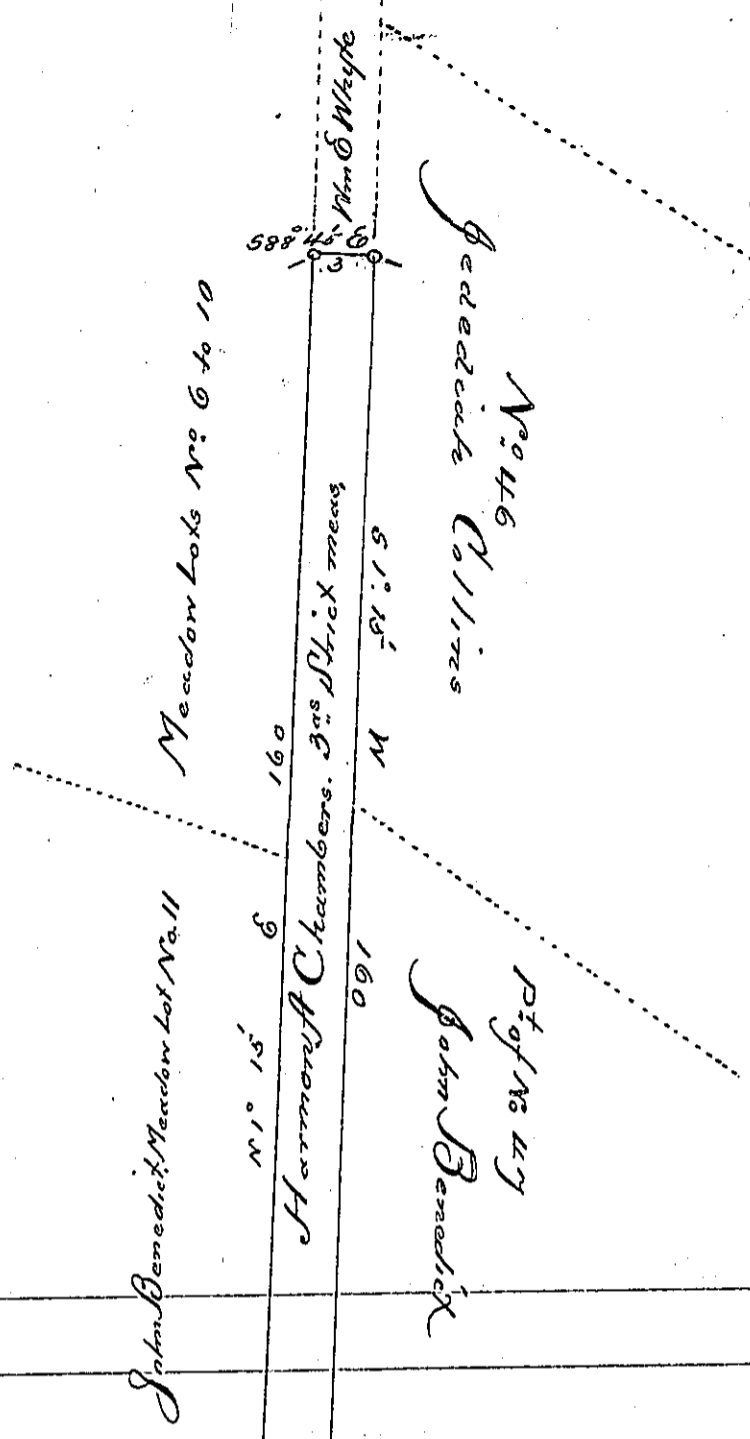


W



A draft of a Tract of Land imposed, situated in Certified Pittston Township, Luzerne County Pa, surrounded by and adjoining lands in the Warrantee names of William E. Whyte on the North, East, Lot No. 46 & 47 of First Div. on the East, By House Lots on the South & South West, and by Meadow Lots 10 & 11, on the West & North West. Containing three Acres Strick measure, and the usual allowance of six per cent for Roads &c. Surveyed the above described Tract of Land to Harmon A. Chambers, March 2, A.D. 1870, By virtue of his warrant letter H, dated June 5th 1869.

W. H. Stuedeman, Deputy Surveyor

Hon. Jacob M. Campbell } I approve of the above Survey
 Surveyor General } Patrick Blewett, County Surveyor

IN TESTIMONY that the above is a copy of the original remaining on file in the Department of Internal Affairs of Pennsylvania, made conformably to an Act of Assembly approved the 16th day of February, 1833, I have hereunto set my Hand and caused the Seal of said Department to be affixed at Harrisburg, this twenty fourth day of May, 1904

Grace B. Brown
 Secretary of Internal Affairs.